




[www.safety1st.com](http://www.safety1st.com)

## Grow and Go

3-in-1 Car Seat



**KEEP INSTRUCTIONS FOR FUTURE USE.**  
Read all instructions before  
using this car seat.

**WARNING**  Failure to follow the  
warnings on the labels and in the  
instruction manual can result in  
serious injury or death  
to your child.



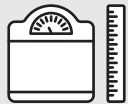
4358-7920

5.29.20

## Overview

Welcome to the Safety 1st family and thank you for choosing this car seat, also known as a child restraint!

To help you get started using your child's new car seat, here are the 4 main tasks you'll need to complete:



### Measure Your Child



### Adjust Car Seat to Fit Your Child



### Install Car Seat into Your Vehicle



### Snugly Secure Your Child in Car Seat

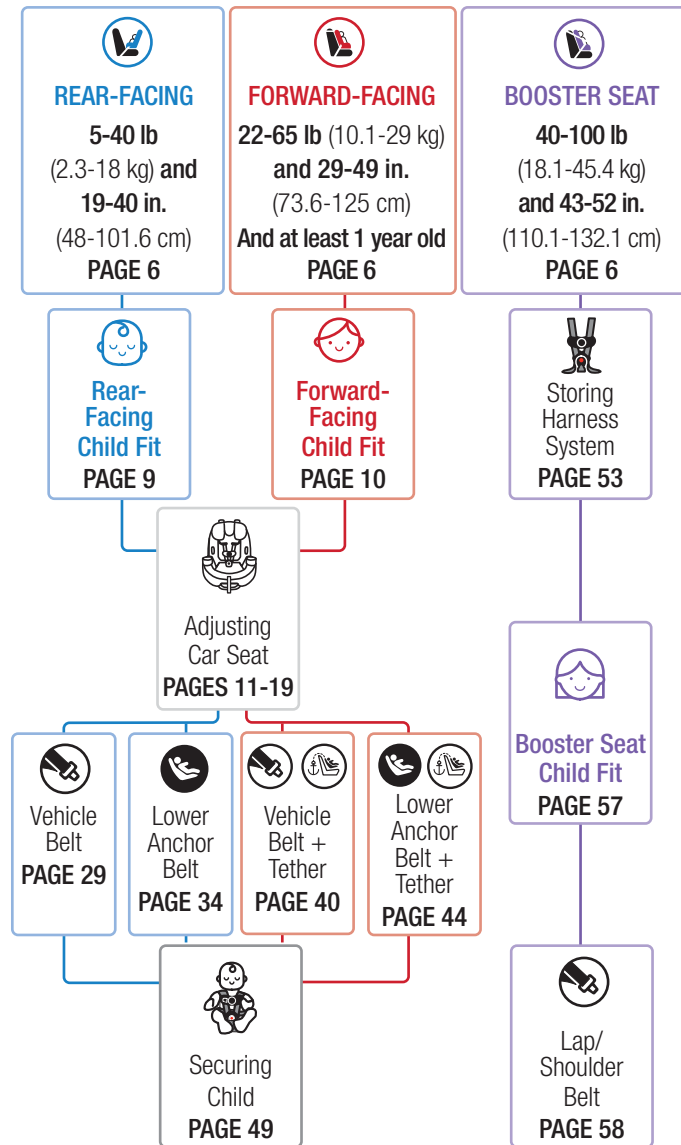
Your child's safety is worth the time it will take for you to read and follow these instructions.

### Ready? Let's go!

**Pages 1-4** will introduce you to the parts of the car seat.

**Page 78** has our contact information. If at any point you would like assistance, please feel free to reach out to us.

## Quick Navigation



## Contents

### Getting Started

Parts of Car Seat.....	1
Accessory Use .....	3
Choosing Car Seat Mode .....	5
Preparing Car Seat for Child Fit.....	7
Rear-Facing Child Fit .....	9
Forward-Facing Child Fit .....	10

### Making Adjustments to Car Seat

Changing Headrest/Harness Height .....	11
Changing Buckle Position .....	12
Harness System Adjustments for Smaller Infants .....	15
Reclining Car Seat .....	19

### Choosing LATCH or Vehicle Belt

LATCH: Lower Anchor Use .....	20
Vehicle Belts .....	22
Tether Use .....	26

### Installation in Vehicle

Rear-Facing Mode .....	28
Vehicle Belt Install .....	29
LATCH: Lower Anchor Belt Install .....	34
Forward-Facing Mode .....	39
Vehicle Belt + Tether Install .....	40
LATCH: Lower Anchor Belt + Tether Install .....	44

### Securing Child in Car Seat .....

49

### Booster Seat

Booster Seat Mode .....	52
Storing Harness System .....	53
Booster Seat Child Fit .....	57
Lap/Shoulder Belt Use .....	58

### Wash & Care of Car Seat Parts

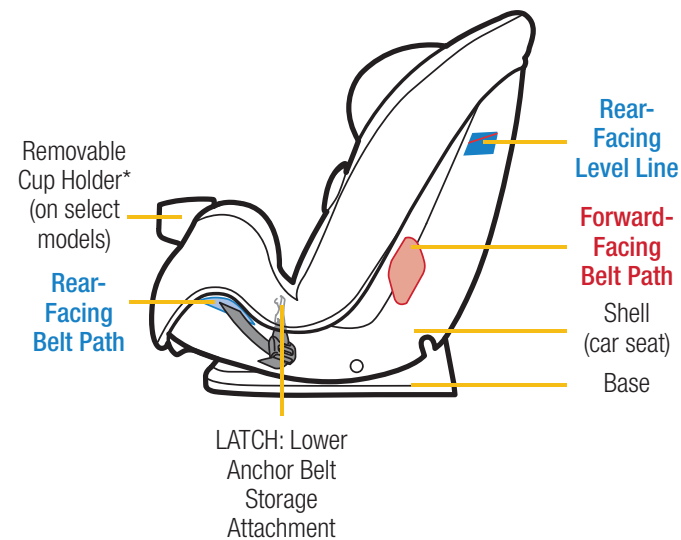
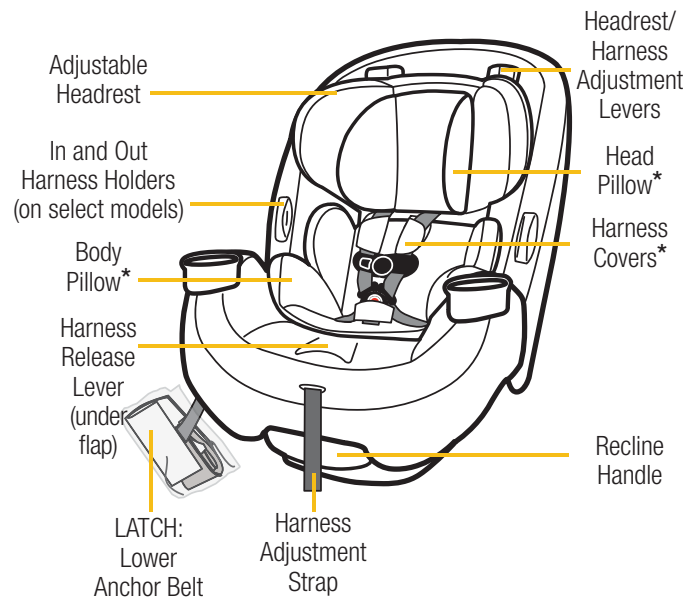
Removing Seat Pad Set for Cleaning .....	60
Cleaning Parts of Car Seat and Installing Seat Pad Set.....	63
Installing Harness System .....	66

### Safety Information

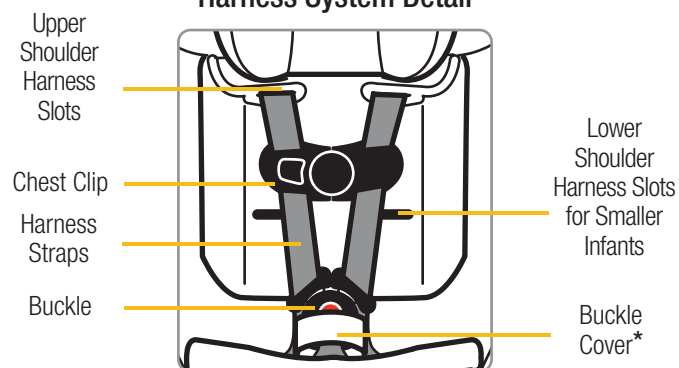
Aircraft Information .....	70
Replacement and Expiration of Car Seat .....	71
Child Restraint Use.....	72
Installation in Vehicle.....	72
Vehicle Seating Position .....	73
Registration and Safety Notices.....	74

### Additional Information

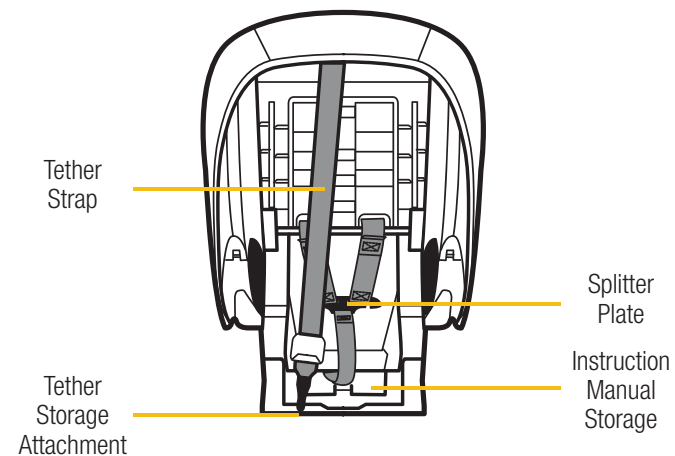
Warranty .....	75
Troubleshooting .....	76
Replacement Parts List .....	77
Dorel Juvenile Group Information.....	78



### Harness System Detail



\*See pages 3-4 for Accessory Use.





### For Use in **Rear-Facing Mode** or **Forward-Facing Mode**

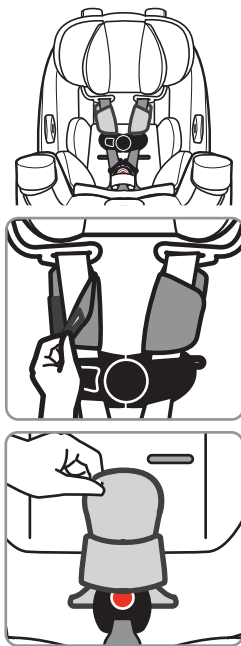
#### Harness Covers

The harness covers help provide comfort to your child's neck.

If the harness covers will not allow proper positioning of the chest clip or interfere with getting a tight enough harness fit for a smaller infant, remove and **do not** use.

Store until your child is large enough to use the harness covers while maintaining a properly fitting harness.

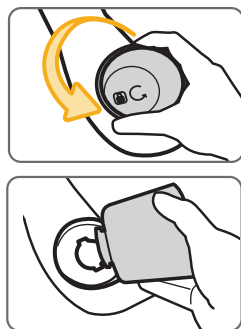
**To remove**, pull the fastening strips apart and pull the harness covers off of the harness strap.



#### Buckle Cover

**To remove**, slide the ends of the buckle cover out of the buckle slot in the pad. Pull it off of the buckle.

**To install**, slide the buckle cover over the buckle and tuck the ends of the buckle cover into the buckle slot in the pad.



#### Removable Cup Holders (on select models)

The cup holders are top-rack dishwasher safe.

**To remove cup holder**, twist the cup holder counterclockwise. Pull it out of slot in shell.

**To install cup holder**, align tabs on bottom of cup holder with slots in shell. Twist clockwise to lock in place.

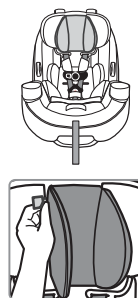


### For Use in **Rear-Facing Mode Only**

#### Head Pillow

**To remove**, gently pull the tabs on the back of the head pillow out of the headrest pad.

**To attach**, slide the tabs on the back of the head pillow into the slots in the headrest pad.



#### Body Pillow

**When the harness straps are in the upper shoulder harness slots:**

**To remove:** Undo the buckle and pull it through the slot in the pillow. Slide the pillow out from behind the harness straps. **To install:** Slide the pillow in behind the harness straps and pull the buckle through the buckle slot in the pillow.

**When the harness straps are in the lower shoulder harness slots for smaller infants:**

**To remove:** From the back of the car seat, remove the harness strap loops from the splitter plate. From the front of the car seat, pull the harness straps out of the shell and the body pillow. Undo the buckle. Pull the buckle through the slot in the pillow and pull the pillow out of the seat.

Rethread the harness for upper harness slots, see pages 68-69.

**To install:** From the back of the car seat, remove the harness strap loops from the splitter plate. From the front of the car seat, pull the harness straps out of the upper shoulder slots. Place the pillow in the seat and pull the buckle through the buckle slot in pad. Rethread the harness straps through the lower shoulder harness slots for smaller infants in the pillow and the shell, see pages 15-18.

## Choosing Car Seat Mode



**Measure your child's weight and height (do not guess) before choosing the car seat's mode.**

Your child's height, weight, and age determine how the car seat should be placed in the vehicle.

Children vary widely in body size, shape, and temperament—**please consult your doctor before switching between any of these modes within the limits and fit requirements of the seat.**

### State Laws

Please be certain to follow your state's laws regarding car seat use.

### American Academy of Pediatrics Recommendations

#### Infants and Toddlers

Should ride in a rear-facing car seat as long as possible, until they reach the highest weight or height allowed by their seat.

#### Toddlers and Preschoolers

Once they are facing forward, children should use a forward-facing car seat with a harness for as long as possible, until they reach the height and weight limits for their seats.

#### School-Aged Children

Once they have outgrown their forward-facing car seat, children should use a belt-positioning booster seat until the vehicle's lap and shoulder seat belt fits properly. This is often when they have reached at least 4 feet 9 inches in height and are 8 to 12 years old.

#### Older Children

All children younger than 13 years should be restrained in the rear seats of vehicles for optimal protection.



### REAR-FACING MODE

**5-40 lb (2.3-18 kg) and 19-40 in. (48-101.6 cm)**

Children under 1 year of age must ride **Rear-Facing**.

**In this car seat, your child can remain Rear-Facing until they outgrow any one of the following:**

- **Weight Limit:** 40 lb (18 kg); **OR**
- **Height Limit:** 40 in. (101.6 cm); **OR**
- **Rear-Facing Child Fit** requirements, see page 9



### FORWARD-FACING MODE

**22-65 lb (10.1-29 kg) and 29-49 in. (73.6-125 cm)**

Children must be at least 1 year of age to ride **Forward-Facing**.

**In this car seat, your child can remain harnessed Forward-Facing until they outgrow any one of the following:**

- **Weight Limit:** 65 lb (29 kg); **OR**
- **Height Limit:** 49 in. (125 cm); **OR**
- **Forward-Facing Child Fit** requirements, see page 10



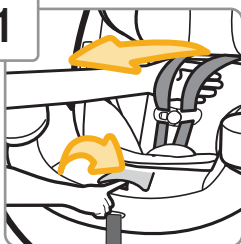
### BOOSTER SEAT MODE

**40-100 lb (18.1-45.4 kg) and 43-52 in. (110.1-132.1 cm)**

**In this car seat, your child can remain in a Booster Seat until they outgrow any one of the following:**

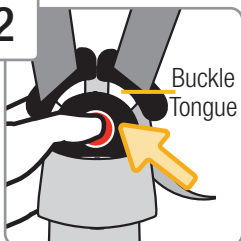
- **Weight Limit:** 100 lb (45.4 kg); **OR**
- **Height Limit:** 52 in. (132.1 cm); **OR**
- **Booster Seat Child Fit** requirements, see page 57

1

**Fully Loosen Harness Straps**

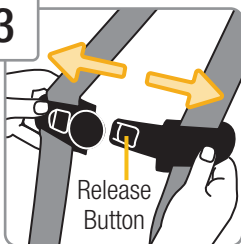
Push down on the harness release lever (through the opening in the pad) while pulling out on the harness straps as shown.

2

**Unbuckle Harness**

Press in towards the **top** of the red button to release the buckle tongues.

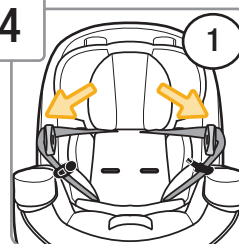
3

**Release Chest Clip**

Hold each side of the chest clip.

Press on the release button with your thumb and pull the chest clip apart.

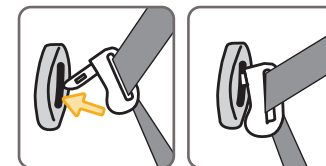
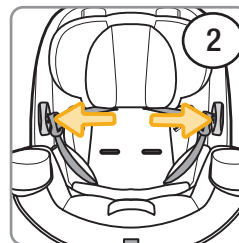
4

**Place Harness Straps Out of Way**

The In and Out Harness Holders (on select models) can be used two ways:

1. You can secure the harness straps around them as shown.

2. Or the buckle tongues can be placed into the slots in the harness holders as shown.



5

**Place Child in Car Seat to Determine Proper Harness Fit**

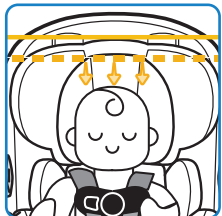
Your child's bottom and back should be flat against the car seat.

For **Rear-Facing Child Fit**, see page 9.

For **Forward-Facing Child Fit**, see page 10.

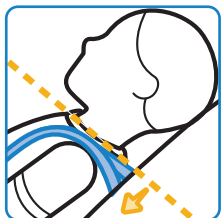


## Rear-Facing Child Fit



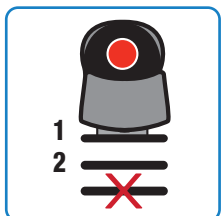
### Head Position

The top of your child's head **must be at least 1 in. (2.5 cm) below** the top of the car seat's headrest.



### Harness Strap Position

The harness strap **must be at or slightly below** your child's shoulders; **never above**.



Do not use 3rd slot in **Rear-Facing Mode**.

### Buckle Position

The buckle **must be** used in either the **1st or 2nd** buckle slot.

Choose the slot closest to your child.

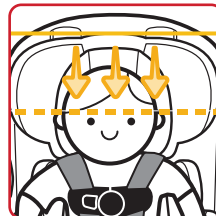
The buckle **should not be underneath or behind** your child.

### Need to make adjustments?

To change headrest/harness height, see page 11.

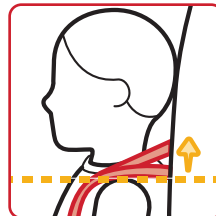
To change buckle position, see pages 12-14.

## Forward-Facing Child Fit



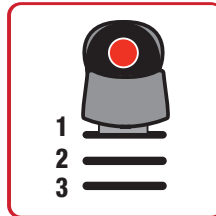
### Head Position

The tops of your child's ears **must be below** the top of the car seat's headrest.



### Harness Strap Position

The harness strap **must be at or slightly above** your child's shoulders; **never below**.



### Buckle Position

The buckle can be used in **any** buckle slot.

Choose the slot closest to your child.

The buckle **should not be underneath or behind** your child.

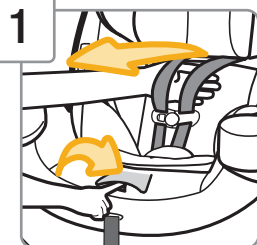
### Need to make adjustments?

To change headrest/harness height, see page 11.

To change buckle position, see pages 12-14.

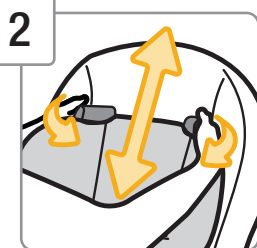


## Changing Headrest/ Harness Height



### Fully Loosen Harness Straps

Push down on the harness release lever (through the opening in the pad) while pulling out on the harness straps as shown.



### Changing Headrest/ Harness Height

Rotate the headrest/harness adjustment levers inward.

Move the headrest up or down to the proper height for your child.

**Make sure it locks securely.**

For **Rear-Facing Child Fit**, see page 9.

For **Forward-Facing Child Fit**, see page 10.

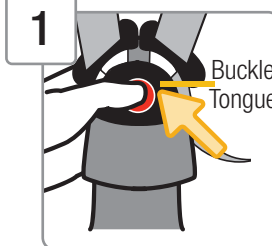
Check your child's fit often.

If you cannot achieve a snug harness fit for your child, see pages 15-18.

To learn how to check harness tightness, see pages 49-51.

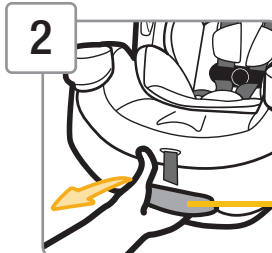
Check the harness straps often for any wear or damage.

## Changing Buckle Position



### Unbuckle Harness

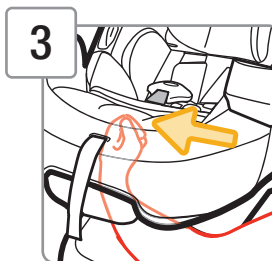
Press in towards the **top** of the red button to release the buckle tongues.



### Fully Recline Car Seat

Pull out on the recline handle and push the top of the car seat back.

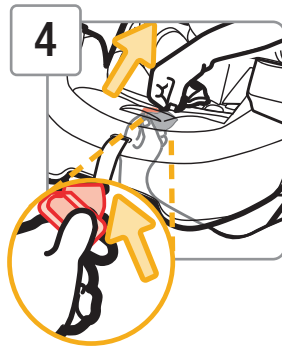
The recline handle is at the front of the car seat.



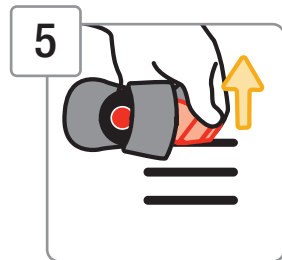
### Locate Buckle's Metal Retainer

Reach under the car seat between the base and shell to reach the buckle's metal retainer.

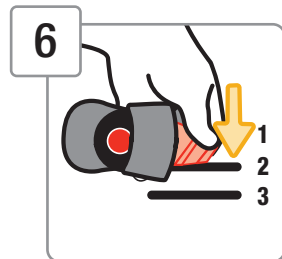
*continued on next page*



**4** Rotate Metal Retainer and Push It Up Through Buckle Slot in Shell



**5** From Top of Car Seat, Pull Buckle and Buckle Cover Out of Shell and Pad



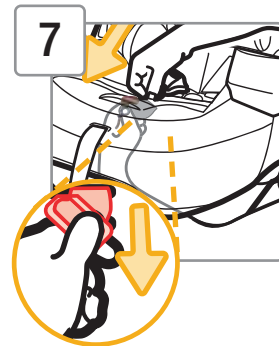
**6** Insert Buckle's Metal Retainer into Buckle Slot Closest to Child

The buckle **must** face out.

Tuck the ends of the buckle cover into the same pad slot as the buckle.

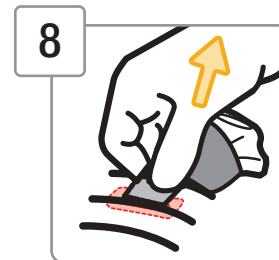
**Rear-Facing Mode:** You **must** use the 1st or 2nd buckle slot.

**Forward-Facing Mode:** Any slot can be used.



**7** Reach Under Car Seat Between Base and Shell

Pull the buckle's metal retainer completely through the seat pad and shell.



**8** Check Buckle

Pull up on the buckle to make sure it is secured.

The buckle **must not** pull out.

Check your child's fit often.

If you cannot achieve a snug harness fit for your child, see pages 15-18.

To learn how to check harness tightness, see pages 49-51.

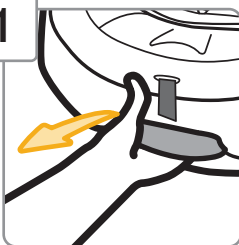
**⚠ Failure to place buckle's metal retainer completely through pad and shell can result in serious injury or death.**

## Harness System Adjustments for Smaller Infants

If you cannot achieve a snug harness fit for your child, you may need to adjust the buckle strap and harness strap length as shown in this section.

### Adjusting Buckle Strap

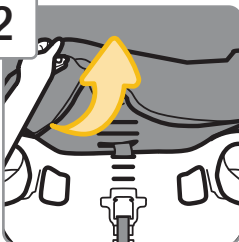
1



**With Buckle in 1st Slot,  
Fully Recline Car Seat**

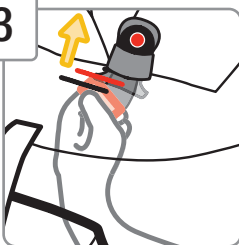
If you need to move the buckle to the 1st slot, see pages 12-14.

2



**Pull Up Front of Car Seat Pad**

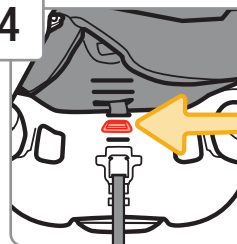
3



**Reach Under Car Seat  
Between Base and Shell**

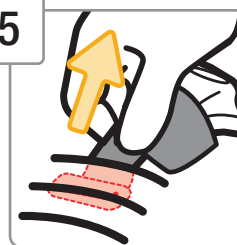
Pull the buckle's metal retainer down and then push it up into the middle slot as shown.

4



**From Top of Car Seat, Lay Metal  
Retainer Flat Against Shell As  
Shown**

5



**Tuck Car Seat Pad Back Around  
Front of Car Seat and Check  
Buckle**

Pull up on the buckle to make sure it is secured.

The buckle **must not** pull out.

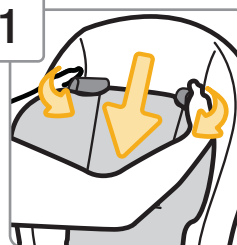
Check your child's fit often.

To learn how to check harness tightness, see pages 49-51.

### Adjusting Harness Strap

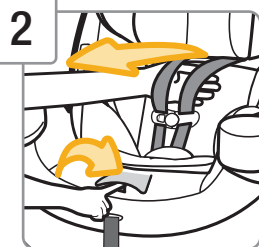
When using the lower shoulder harness slots for smaller children, you must use the body pillow and the headrest must be in the lowest position.

1



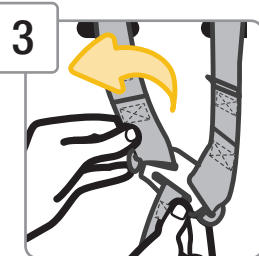
**Adjust Headrest to  
Lowest Position**

*continued on next page*

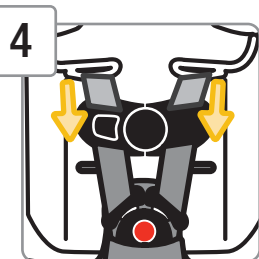


### Fully Loosen Harness Straps

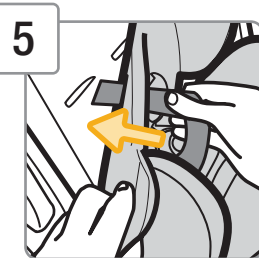
Push down on the harness release lever (through the opening in the pad) while pulling out on the harness straps as shown.



From Back of Car Seat, Remove Harness Strap Loops From Splitter Plate



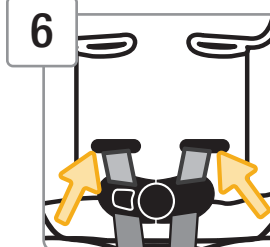
Pull Harness Straps Out of Upper Shoulder Harness Slots



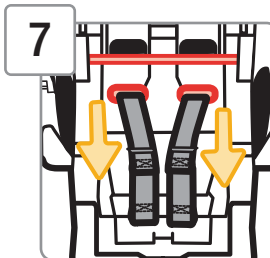
Pull Body Pillow Forward Away from Car Seat

Thread the harness straps through the slots in pillow.

You **must** use the body pillow.



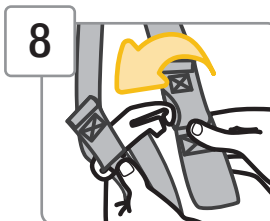
Thread Harness Straps Through Lower Shoulder Harness Slots For Smaller Infants in Seat Pad and Shell



From Back of Car Seat, Pull Harness Straps Through Shell

The harness straps **must** be in the shoulder harness slots **below** the metal bar as shown.

**Do not** twist the harness straps.

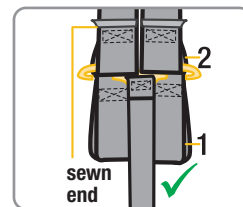


Attach 2nd Harness Strap Loops to Splitter Plate As Shown

The sewn ends of the harness strap loops **must** face towards you.

**Do not** twist the harness strap or the harness adjustment strap.

Make sure the same harness strap loops are fitted **completely** on both sides of the splitter plate.

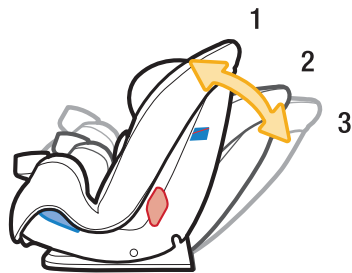


Check your child's fit often.

To learn how to check harness tightness, see pages 49-51.

**⚠** The harness system must be installed correctly. Do not use a child restraint with damaged harness straps.

This car seat has 3 positions.



### Rear-Facing Mode - 3 Reclined or 2 Semi-reclined

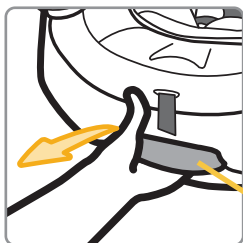
For children **who cannot** sit up unassisted, the **Rear-Facing Level Line** on the shell **must** be parallel with the ground using either **Position 3 or 2**.

For children **who can** sit up unassisted, you may make the car seat more upright in **Position 2**.

### Forward-Facing Mode - 1 Upright or 2 Semi-reclined\*

### Booster Seat Mode - 1 Upright or 2 Semi-reclined\*

\*When used in **Forward-Facing Mode** or **Booster Seat Mode**, semi-reclined **Position 2** is **only** to be used **if necessary** to install the car seat flush against the vehicle seat back. The vehicle seat back must be upright.



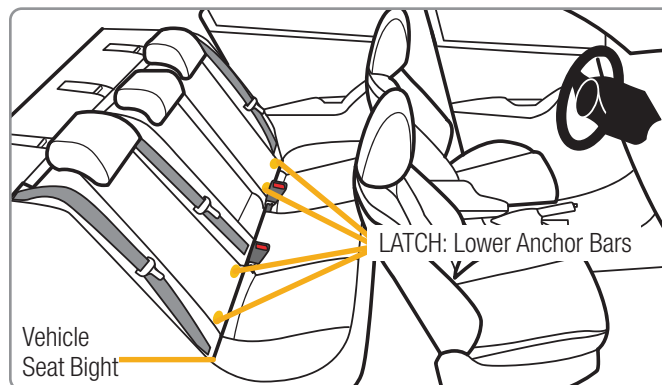
**To Recline:** Pull out on the recline handle and push the top of the car seat back.

**For More Upright:** Pull out on the recline handle and pull the top of the car seat forward.

The recline handle is at the front of the car seat.



For Use in **Rear-Facing Mode**  
or **Forward-Facing Mode**



Your vehicle's features may be considerably different than those pictured here.

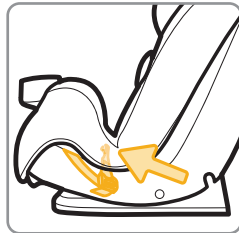
The lower anchors of **LATCH** (Lower **A**nchors and **T**ethers for **C**hildren) is a universal system for installing car seats without using vehicle seat belts.

The LATCH: lower anchor belt can **only** be used in vehicles that have the lower anchor bars installed in designated seating positions. Most vehicles manufactured after September 2002 are equipped with LATCH: lower anchor bars.

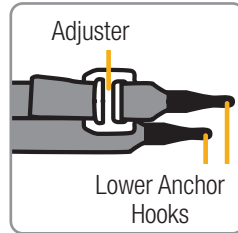
Check your vehicle owner's manual to see which seating positions may be equipped with LATCH: lower anchor bars.

**⚠ Do not use both the lower anchor belt and vehicle belt at the same time. When used correctly the lower anchor belt or the vehicle belts are equally safe.**

*continued on next page*



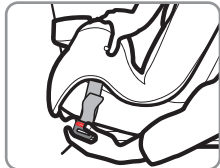
Lower Anchor Belt  
Storage Attachment



Adjuster  
Lower Anchor  
Belt Parts

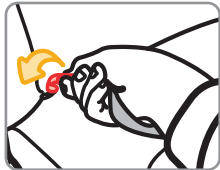
### To Remove Lower Anchor Belt from Storage Attachment on Car Seat

Squeeze the spring lever on the hooks and remove the hooks from the storage attachments.

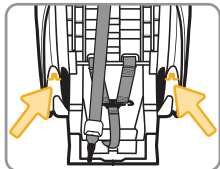


### To Remove Lower Anchor Belt from Vehicle's Lower Anchor Bars

Remove the tension from the belt by pushing down on the side of the car seat with the adjuster. Then press the adjuster's button to loosen the belt.



Remove the hook from the anchor by squeezing the spring lever on the hook, pushing the hook back into the seat bight, and rotating the hook to the side. Then pull the hook out of the vehicle seat bight.

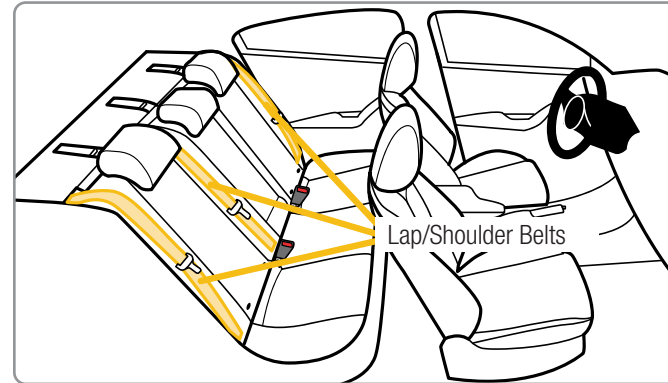


Lower Anchor Belt  
Storage Location

### To Store Lower Anchor Belt

When using the vehicle belts to install, using the **Booster Seat Mode**, or when the car seat is not installed in a vehicle, the lower anchor belt must be properly stored in its storage location.

Thread the lower anchor belt through the **Rear-Facing Belt Path** then attach the hooks to the storage attachments as shown. Gently tighten to remove slack.



Your vehicle's features may be considerably different than those pictured here.

If LATCH: lower anchors are not an option or if your child weighs more than **40 lb** (18 kg), you must use the vehicle seat belt system to install the car seat.

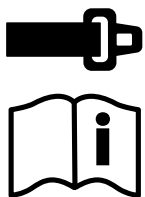
**Not all vehicle belts and seating positions will work with car seats.**

Please go through the steps following steps to understand how to lock a car seat in **Rear-Facing Mode** or **Forward-Facing Mode** with a vehicle belt.

*continued on next page*



1



### You Must Review Your Vehicle Owner's Manual

Your vehicle owner's manual will let you know which vehicle belts and seating positions car seats can be installed in.

2



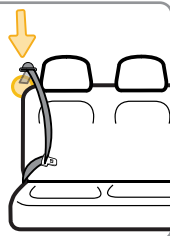
### Check How This Car Seat Will Be Locked Into Place

The vehicle belt **must not** loosen after tightening. This means there needs to be a way to lock the vehicle belt.

#### The ways this can be done are:

- By using the seat belt's retractor, see step 3; **OR**
- By using the seat belt's latch plate, see step 4.

3



### Check Retractor

Retractors pull seat belts into stored positions and lock the belt to hold passengers in place.

See the next page for some common types of vehicle belt retractors that will work with this car seat.



## Types of Retractors

### Switchable Retractor (most vehicles have this type)



This retractor can be switched to a locking mode.

You **must have the retractor in the locking mode** to use the seat belt with this car seat.

**Switching to locking mode:** Slowly pull the shoulder belt all the way out, then let it go back in **1-2 in.** (2.5-5 cm).

As it goes back in, you will most likely hear a ratcheting sound.

Gently pull the belt to see if it has locked. You will not be able to pull any more belt out if the lock has engaged.

### Automatic Locking Retractor



This retractor always locks.

It will automatically lock after slowly pulling the seat belt out at least halfway and letting the belt go back into the retractor **1-2 in.** (2.5-5 cm).

### Emergency Locking Retractor

See Step 4, "Check the Latch Plates".

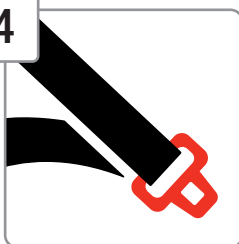
If the retractor does not lock, it is most likely an Emergency Locking Retractor. These retractors only lock during a sudden stop or collision.

You will need to determine if your seat belt's latch plate can lock the belt. See step 4, "Check the Latch Plates".

*continued on next page*



4



### Check Latch Plates

Latch plates are the part of the seat belt that goes into the buckle.

#### To see if the latch plate locks:

1. Buckle Vehicle Belt
2. Firmly Tug Lap Portion of Seat Belt While Pulling It Up

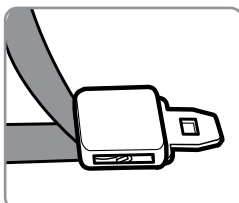
If the vehicle belt does not slide through the latch plate, it's locked.

If the latch plate slides up and down the vehicle belt, it is a **sliding latch plate**.

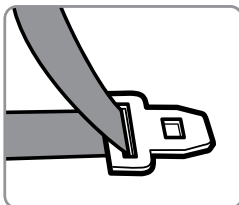
Sliding latch plates easily slip between the lap and shoulder portions of the belt.

**If you have an Emergency Locking Retractor with a Sliding Latch Plate, you must use a locking clip.**

**Please contact us for one, see page 77.**



Locking Latch Plate



Emergency Locking Retractor with a Sliding Latch Plate

### Never Use With This Car Seat

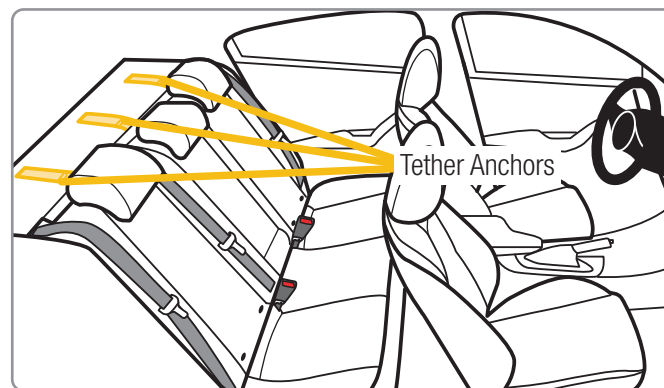
Emergency Locking Retractor Lap Only Belt



Inflatable Seat Belts



### For Forward-Facing Mode Only



Your vehicle's features may be considerably different than those pictured here.

You **must** always attach, adjust, and secure the tether (top anchorage) strap when installing the car seat in the **Forward-Facing Mode** with internal harness. Tethers improve the installation and stability of car seats and reduce the risk of injury.

Attach the tether hook to the tether anchor designated by your vehicle manufacturer for that seating position. Check your vehicle owner's manual for more information.

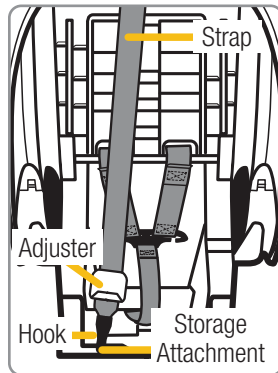
If the seating position does not have a tether anchor, use a different seating position or see your dealer or a qualified mechanic and have one installed.

**⚠ Using this child restraint without the tether strap anchored as required by the manufacturer would be a misuse of the child restraint and, in a sudden stop or crash, could result in serious injury or death.**

**Do not fasten multiple tether hooks on the same tether anchor in the vehicle.**

*continued on next page*



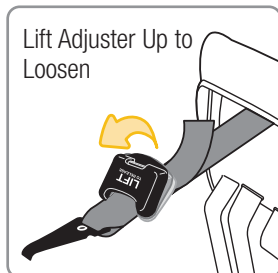
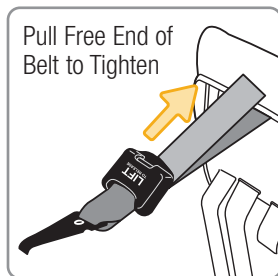


Tether Storage  
and Parts

### Storing Tether Strap

When installing in the **Rear-Facing Mode**, using the **Booster Seat Mode**, or when the car seat is not installed in a vehicle, attach the tether hook to its storage attachment on the back of the car seat as shown.

Gently tighten to remove slack.



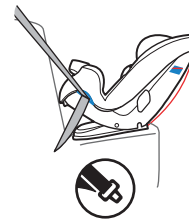
### Adjusting Tether Strap

**To tighten:** After the car seat is locked into place with the lower anchor belt or vehicle belt, push down on the car seat and gently pull on the free end of the tether strap.

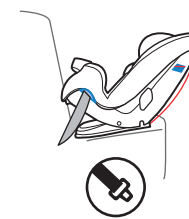
**To loosen:** Lift up on the tether adjuster and push it towards the tether hook.



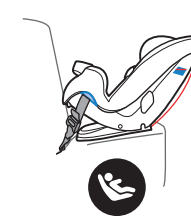
5-40 lb (2.3-18 kg) and 19-40 in. (48-101.6 cm)



Lap/Shoulder  
Belt



Lap Belt



LATCH: Lower  
Anchor Belt



Never install a rear-facing child restraint in the front seat of a vehicle equipped with an active frontal airbag.

Do not use the tether for rear-facing mode. Secure the tether strap hook to its storage attachment.

Do not use the lower anchor belt along with the vehicle lap or lap/shoulder belt.

Check the vehicle belt or the lower anchor belt before each use. Use only if the belt can be tightened properly and locked securely in place.

Do not fasten multiple lower anchor hooks on the same lower anchor bar in the vehicle.

This child restraint must always face the rear of the vehicle until the child is at least 1 year old and weighs 22 lb (10 kg).



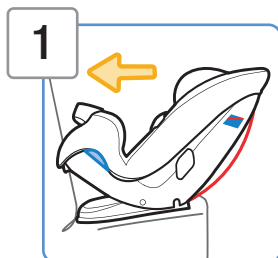
Before you begin installing the car seat into your vehicle, did you check:



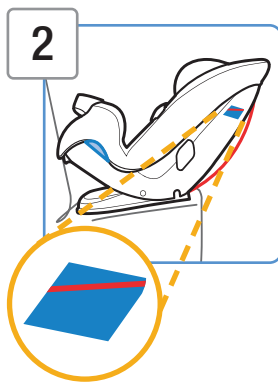
**Your child's weight and height?**  
See page 6.



**Your child's fit?** See page 9.  
Do you need to make adjustments to the harness/headrest height or the buckle position?



**1** Place Car Seat **Rear-Facing** in Back Seat

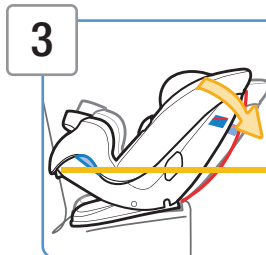


**2** Check **Rear-Facing Level Line**

For children **who cannot** sit up unassisted, the **Rear-Facing Level Line** must be parallel with the ground.

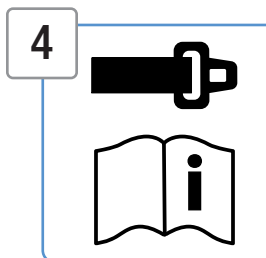
Recline the car seat to achieve the correct angle, see step 3.

For children **who can** sit up unassisted, you may make the car seat more upright in **Position 2**.



**3** Recline Car Seat

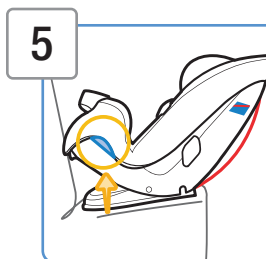
Pull out on the recline handle and push the top of the car seat back.  
The recline handle is at the front of the car seat.



**4** Check if Your Vehicle Belts Will Work With This Car Seat

This is very important because **not all vehicle belts will work with car seats**.

Review pages 22-25 and your vehicle owner's manual to find out what kind of vehicle belts you have and how to lock a car seat in place.

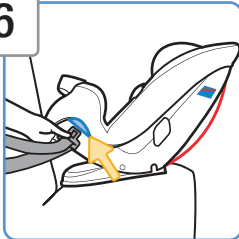


**5** Locate **Rear-Facing Belt Path**

*continued on next page*



6



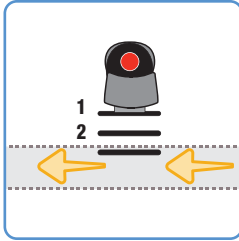
### Route Vehicle Belt

Thread the vehicle belt through the **Rear-Facing Belt Path** opening as shown.

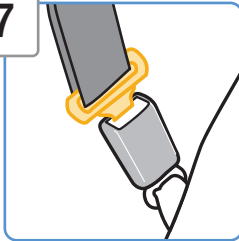
The belt goes:

- across the car seat; **AND**
- under the car seat pad; **AND**
- in front of the buckle; **AND**
- out the other **Rear-Facing Belt Path** opening.

Do not twist belt.

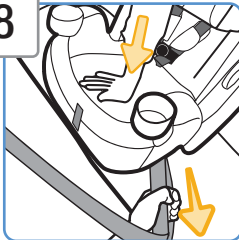


7



### Buckle Vehicle Belt

8

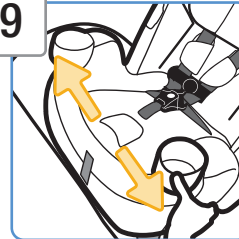


### Tighten Belt

Place your hand in the car seat.

Firmly push the car seat down and back towards the vehicle seat back while pulling the shoulder belt or the free end of lap belt parallel with the **Rear-Facing Belt Path** as shown.

9



### Check Belt Tightness

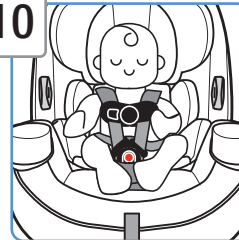
Hold the car seat at the **Rear-Facing Belt Path** with your weaker hand.

Push and pull the car seat from side to side. It should not move more than **1 in. (2.5 cm)**.

If it moves more than 1 in. (2.5 cm), you can try:

- Pulling the belt tighter; **OR**
- Reinstalling the car seat; **OR**
- Changing to a different seating location; **OR**
- Switching to LATCH: lower anchor belt installation if lower anchors are available in your vehicle

10



### Secure Child in Car Seat

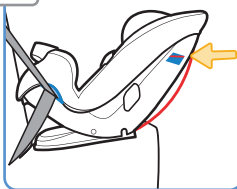
To properly secure your child in the car seat, see pages 49-51.

Check your child's fit often and make any needed adjustments to the car seat as they grow.

*continued on next page*

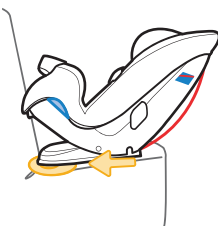


11



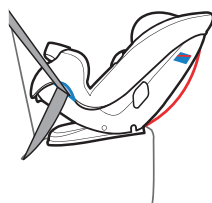
### Recheck **Rear-Facing Level Line**

Redo the installation if the car seat is not reclined correctly for your child.



You may need to place a tightly rolled towel(s) or foam pool noodle(s) under the front of the car seat's base to help get the correct recline angle for the **Rear-Facing Level Line**.

Check often to make sure padding is still in place and the belt is tight.

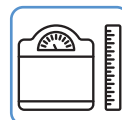


### Finished!

Check the tightness of the install often to make sure it has not loosened.



Before you begin installing the car seat into your vehicle, did you check:



Your child's weight and height?  
See page 6.



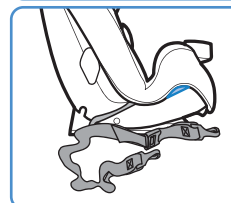
Your child's fit? See page 9.  
Do you need to make adjustments to the harness/headrest height or the buckle position?

1



### Remove Lower Anchor Belt from Storage Attachments

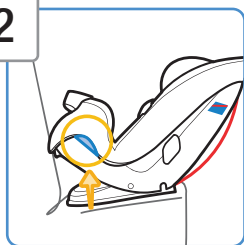
Or if the lower anchor belt was used **Forward-Facing**, remove it from the **Forward-Facing Belt Path** so both hooks are on the same side of the car seat as shown.



*continued on next page*

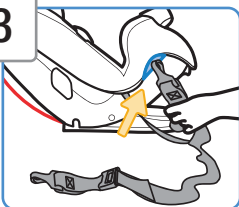


2



Locate **Rear-Facing Belt Path**

3



**Route Lower Anchor Belt**

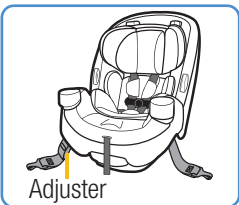
Thread the hook through the **Rear-Facing Belt Path** opening as shown.

The adjuster can be on either side of the car seat.

**The belt goes:**

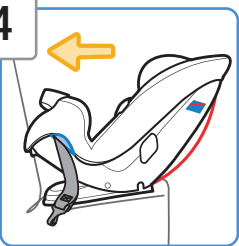
- across the car seat; **AND**
- under the car seat pad; **AND**
- in front of the buckle; **AND**
- out the other **Rear-Facing Belt Path** opening.

**Do not twist belt.**



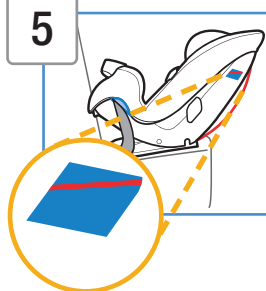
**Finished Lower Anchor Belt Routing**

4



**Place Car Seat Rear-Facing in Back Seat**

5



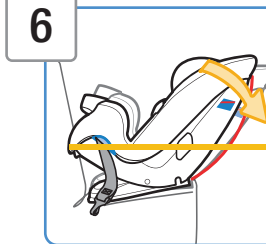
**Check Rear-Facing Level Line**

For children **who cannot** sit up unassisted, the **Rear-Facing Level Line** must be parallel with the ground.

Recline the car seat to achieve the correct angle, see step 6.

For children **who can** sit up unassisted, you may make the car seat more upright in **Position 2**.

6

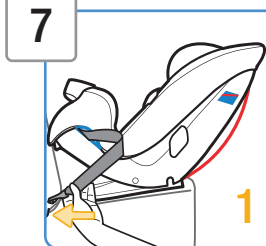


**Recline Car Seat**

Pull out on the recline handle and push the top of the car seat back.

The recline handle is at the front of the car seat.

7



**Attach Lower Anchor Hooks to Vehicle's Lower Anchors in Seat Bight**

Review your vehicle owner's manual for LATCH: lower anchor locations and lower anchor belt use.

Fasten one hook to one vehicle lower anchor bar.

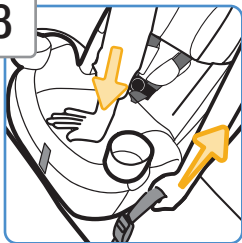
Then repeat for the second hook on the other side of the car seat.



*continued on next page*

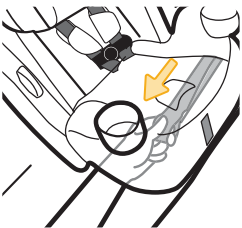


8



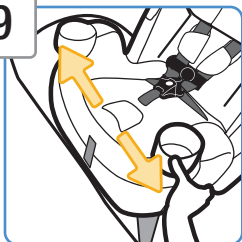
### Tighten Belt

Place your hand in the car seat. Firmly push the car seat down and back towards the vehicle seat back while pulling the free end of the belt parallel with the **Rear-Facing Belt Path** as shown.



It may be easier to tighten the belt by reaching into the **Rear-Facing Belt Path** and pulling the free end of the belt towards you and parallel with the belt path as shown.

9



### Check Belt Tightness

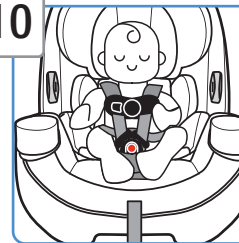
Hold the car seat at the **Rear-Facing Belt Path** with your weaker hand. Push and pull the car seat from side to side. It should not move more than **1 in. (2.5 cm)**.

**If it moves more than 1 in. (2.5 cm), you can try:**

- Pulling the belt tighter; **OR**
- Reinstalling the car seat; **OR**
- Changing to a different seating location; **OR**
- Switching to vehicle belt installation



10

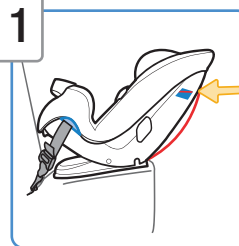


### Secure Child in Car Seat

To properly secure your child in the car seat, see pages 49-51.

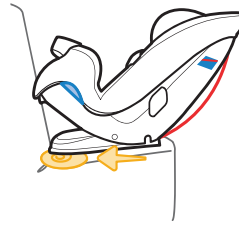
Check your child's fit often and make any needed adjustments to the car seat as they grow.

11



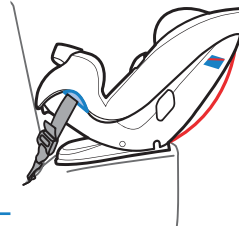
### Recheck **Rear-Facing Level Line**

**Redo the installation if the car seat is not reclined correctly for your child.**



You may need to place a tightly rolled towel(s) or foam pool noodle(s) under the front of the car seat's base to help get the correct recline angle for the **Rear-Facing Level Line**.

Check often to make sure padding is still in place and the belt is tight.



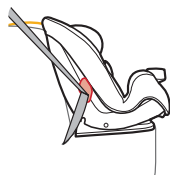
### Finished!

Check the tightness of the install often to make sure it has not loosened.



## Forward-Facing Mode

**22-65 lb (10.1-29 kg) and 29-49 in. (73.6-125 cm)**  
and at least 1 year old



Lap/Shoulder  
Belt and Tether

Up to 65 lb  
(29 kg)



Lap Belt  
and Tether

Up to 65 lb  
(29 kg)



LATCH: Lower Anchor  
Belt and Tether

Do not install by this  
method for a child  
weighing more than  
40 lbs (18 kg).



Do not use the lower anchors of the child restraint anchor-age system (LATCH system) to attach this child restraint when restraining a child weighing more than 40 lbs (18 kg).

The vehicle belt must be used for installation if your child weighs more than 40 lb (18 kg).

Do not use the lower anchor belt along with the vehicle lap or lap/shoulder belt.

Check the vehicle belt or the lower anchor belt before each use. Use only if the belt can be tightened properly and locked securely in place.

Do not fasten multiple lower anchor hooks on the same lower anchor bar in the vehicle.

In this child restraint your child must be at least 1 year old and weigh 22 lb (10 kg) before they sit forward-facing.

## Vehicle Belt + Tether Install



Before you begin installing the car seat into your vehicle, did you check:

Your child's weight and height?

See page 39.

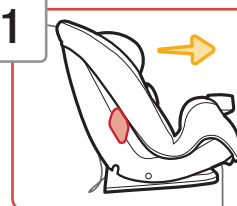


Your child's fit? See page 10.

Do you need to make adjustments to the harness/headrest height or the buckle position?

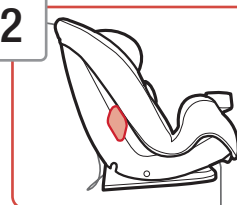


1



Place Car Seat **Forward-Facing** in Back Seat

2

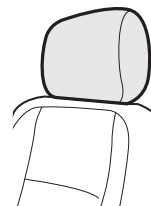


Make Car Seat Flush  
Against Vehicle Seat

The vehicle seat back must be upright.

Put the car seat into **Position 1**.

**Only** use semi-reclined **Position 2** if **necessary** to install the car seat flush against the vehicle seat back.

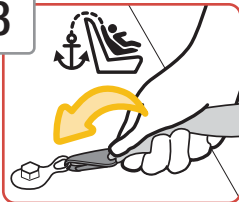


If your vehicle seat's headrest interferes with a flush car seat fit, check your vehicle owner's manual to see if the headrest can be removed, adjusted, or if there are other possible seating locations to use the car seat.

*continued on next page*



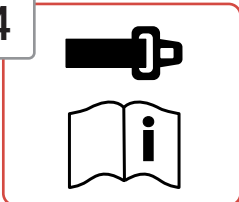
3



### Loosely Attach Tether Hook to Vehicle's Tether Anchor

Check your vehicle owner's manual for specific tether (top anchorage) anchor locations.

4

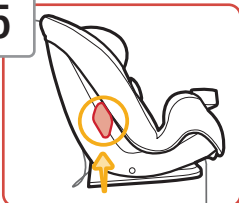


### Check if Your Vehicle Belts Will Work With This Car Seat

This is very important because **not all vehicle belts will work with car seats.**

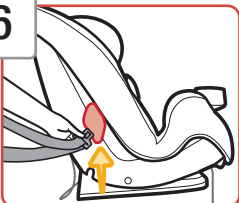
Review pages 22-25 and your vehicle owner's manual to find out what kind of vehicle belt you have and how to lock a car seat in place.

5



### Locate **Forward-Facing Belt Path**

6



### Route Vehicle Belt

Thread the vehicle belt into the **Forward-Facing Belt Path** opening as shown.

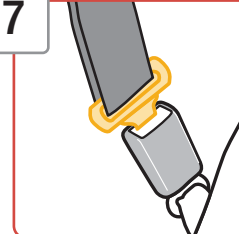
#### The belt goes:

- across the car seat; **AND**
- under the car seat pad; **AND**
- out the other **Forward-Facing Belt Path** opening.

**Do not twist belt.**

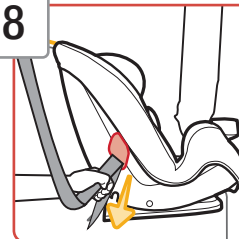


7



### Buckle Vehicle Belt

8

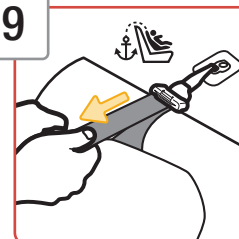


### Tighten Belt

Place your hand in the car seat.

Firmly push the car seat down and back towards the vehicle seat back while pulling the shoulder belt or the free end of lap belt parallel with the **Forward-Facing Belt Path** as shown.

9



### Tighten Tether

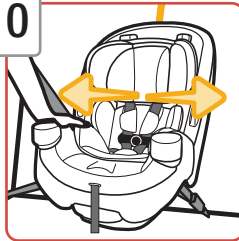
Push firmly on the back of the car seat and pull the free end of the tether strap to remove all of the slack.

*continued on next page*





10

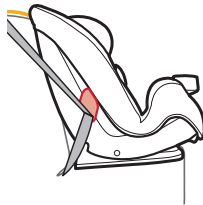


### Check Belt Tightness

Hold the car seat at the **Forward-Facing Belt Path** with your weaker hand.

Push and pull the car seat from side to side. It should not move more than **1 in. (2.5 cm)**.

- If it moves more than 1 in. (2.5 cm), you can try:
- Putting your knee in the car seat and pulling the belt tighter; **OR**
- Reinstalling the car seat; **OR**
- Changing to a different seating location; **OR**
- Switching to LATCH: lower anchor belt installation if lower anchors are available in your vehicle



### Finished!

Check the tightness of the install often to make sure it has not loosened.



### Securing Child in Car Seat

To properly secure your child in the car seat, see pages 49-51.

Check your child's fit often and make any needed adjustments to the car seat as they grow.

## LATCH: Lower Anchor + Tether Install



Before you begin installing the car seat into your vehicle, did you check:



Your child's weight and height?

See page 39.



Your child's fit? See page 10.

Do you need to make adjustments to the harness/headrest height or the buckle position?

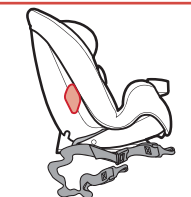
**⚠ Do not use the lower anchors of the child restraint anchorage system (LATCH system) to attach this child restraint when restraining a child weighing more than 40 lbs (18 kg).**

1



### Remove Lower Anchor Belt from Storage Location

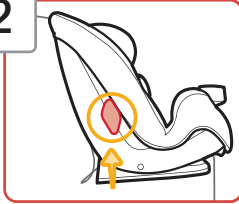
Remove the belt from the **Rear-Facing Belt Path** so both hooks are on the same side of the car seat as shown.



*continued on next page*

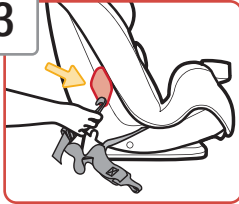


2



Locate **Forward-Facing Belt Path**

3



**Route Lower Anchor Belt**

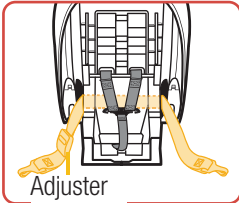
Thread the hook through the **Forward-Facing Belt Path** opening as shown.

The adjuster can be on either side of the car seat.

**The belt goes:**

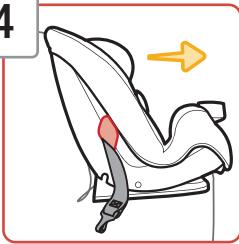
- across the car seat; **AND**
- under the car seat pad; **AND**
- out the other **Forward-Facing Belt Path** opening.

**Do not twist belt.**



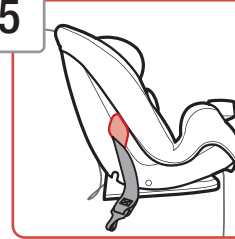
**Finished Lower Anchor Belt Routing**

4



Place Car Seat **Forward-Facing** in Back Seat

5

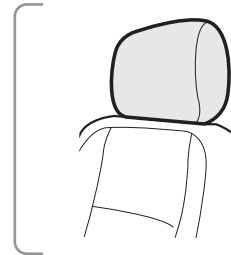


**Make Car Seat Flush Against Vehicle Seat**

The vehicle seat back must be upright.

Put the car seat into **Position 1**.

**Only** use semi-reclined **Position 2** **if necessary** to install the car seat flush against the vehicle seat back.



**If your vehicle seat's headrest interferes with a flush car seat fit**, check your vehicle owner's manual to see if the headrest can be removed, adjusted, or if there are other possible seating locations to use the car seat.

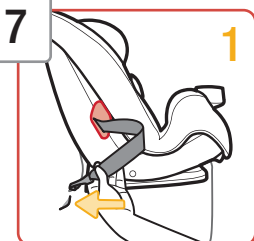
6



**Loosely Attach Tether Hook to Vehicle's Tether Anchor**

Check your vehicle owner's manual for specific tether (top anchorage) anchor locations.

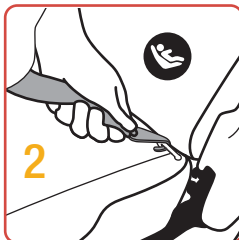
*continued on next page*



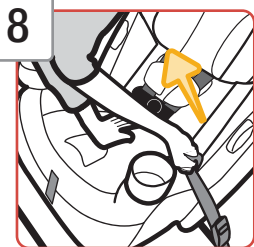
### Attach Lower Anchor Hooks to Vehicle's Lower Anchors in Seat Bight

Review your vehicle owner's manual for LATCH: lower anchor locations and lower anchor belt use.

Fasten one hook to one vehicle lower anchor bar.



Then repeat for the second hook on the other side of the car seat.

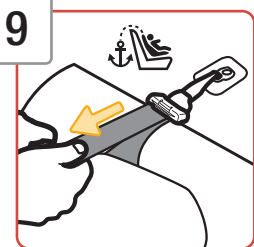


8

### Tighten Belt

Place your hand in the car seat.

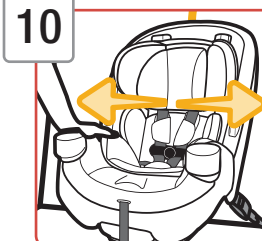
Firmly push the car seat down and back towards the vehicle seat back while pulling the free end of the belt parallel with the **Forward-Facing Belt Path** as shown.



9

### Tighten Tether

Push firmly on the back of the car seat and pull the free end of the tether strap to remove all of the slack.



10

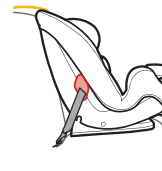
### Check Belt Tightness

Hold the car seat at the **Forward-Facing Belt Path** with your weaker hand.

Push and pull the car seat from side to side. It should not move more than **1 in. (2.5 cm)**.

**If it moves more than 1 in. (2.5 cm), you can try:**

- Putting your knee in the car seat and pulling the belt tighter; **OR**
- Reinstalling the car seat; **OR**
- Changing to a different seating location; **OR**
- Switching to vehicle belt installation



### Finished!

Check the tightness of the install often to make sure it has not loosened.

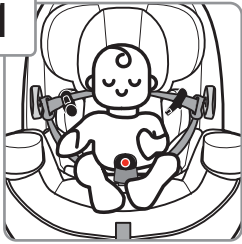


### Securing Child in Car Seat

To properly secure your child in the car seat, see pages 49-51.

Check your child's fit often and make any needed adjustments to the car seat as they grow.

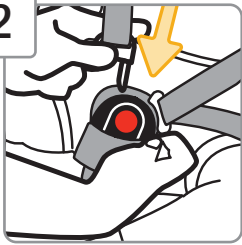
1

**Place Child in Car Seat**

Your child's bottom and back should be flat against the car seat.

Position the harness straps over your child's shoulders and upper thighs.

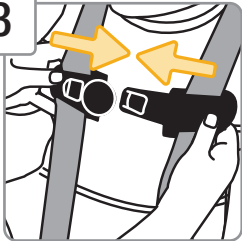
2

**Buckle Harness**

Push the buckle tongues into the buckle until you hear them "click".

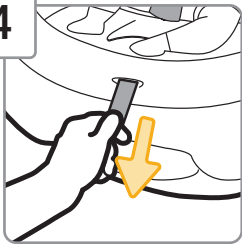
Pull up on the harness straps to make sure the buckle is locked.

3

**Fasten Chest Clip**

Insert right half of the chest clip into the left half and snap together.

4

**Tighten Harness**

Pull the harness adjustment strap straight out to snugly tighten the harness system.

5

**Position Chest Clip**

Slide the chest clip up the harness straps and position it at mid-chest (even with armpits) and away from your child's neck.

6

**Check Harness Tightness**

Unfasten the harness covers.

Try to pinch the harness strap at the shoulder vertically between your index finger and thumb as shown.

**If your fingers slip off**, the harness system is tight enough.

**If you can pinch the harness strap**, tighten more.

Fasten the harness covers.

**A snug strap should not allow any slack.**

**It lies in a relatively straight line without sagging.**

**It does not press on the child's flesh or push the child's body into an unnatural position.**

*continued on next page*



## Finished!

Your child is now secured in the car seat.

Check your child's fit often and make any needed adjustments to the car seat as they grow.

### To Remove Child from Car Seat:

1. Loosen Harness Strap
2. Unbuckle Harness
3. Release Chest Clip
4. Remove Child



Failure to fasten and tighten the harness system correctly may allow the child to be ejected from the child restraint in a crash or sudden stop causing serious injury or death.



Do not mistake comfort for safety. The harness system must be snugly adjusted.

Do not put snowsuits or bulky garments on your child when placing them in the child restraint. Bulky clothing can prevent the harness straps from being tightened properly.



**40-100 lb (18.1-45.4 kg) and  
43-52 in. (110.1-132.1 cm)**



**Lap/Shoulder  
Belt**



**Keep the booster  
seat belted when  
not in use.**



**Do not use the harness system when using as a booster seat.**

**Use only the vehicle's lap and shoulder belt system when restraining the child in this booster seat.**



**Do not use only the lap belt when using this seat as a booster seat. The shoulder belt must always be adjusted snugly across the child's chest. NEVER place shoulder belt under the child's arms or behind their back.**

**Do not use this booster seat if the tops of your child's ears are above the top of the booster seat's headrest.**

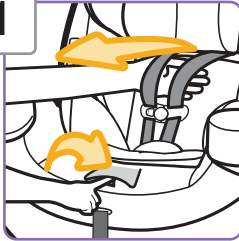
**Do not use LATCH when using as a booster seat. Secure the lower anchor belt and the tether strap to their storage attachments.**

You must store the harness system and remove the accessories when using the **Booster Seat Mode**.

To remove accessories, see pages 3-4.

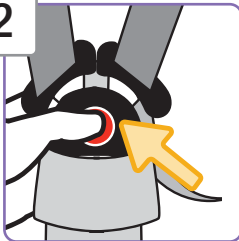
### Removing Buckle

1



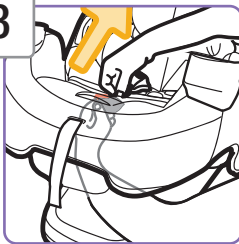
Fully Loosen Harness Straps

2



Unbuckle Harness

3



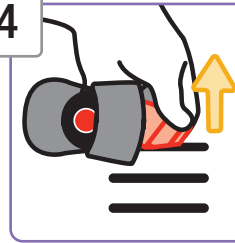
Locate Buckle's Metal Retainer

Fully recline the car seat.

Reach under the car seat between the base.

Rotate the metal retainer and push it up through the shell and pad.

4



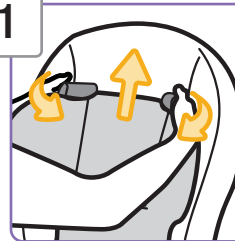
From Top of Car Seat,  
Pull Buckle and Buckle  
Cover Out of Shell and Pad

Store the buckle and buckle cover in a safe place for future use.

### Storing Harness System

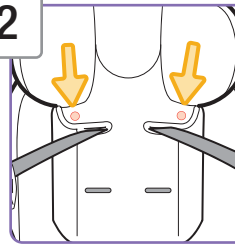
**⚠** Do not fully pull the harness strap out of the car seat. Leave it threaded in the hip harness slots. If removed, you will not be able to rethread it.

1



Adjust Headrest to  
Highest Position

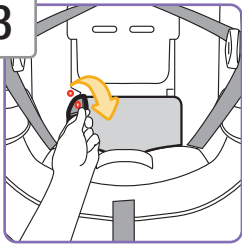
2



Undo Fasteners on  
Headrest Pad

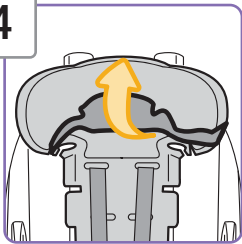
*continued on next page*

3



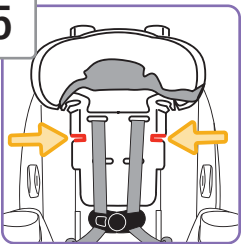
Undo Fasteners on Seat Pad

4

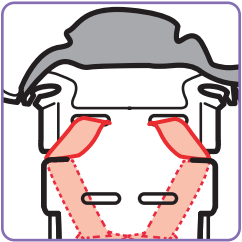


Pull Headrest Pad Off Bottom of Headrest As Shown

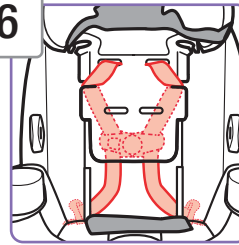
5



Thread Harness Straps into Slots on Sides of Headrest As Shown



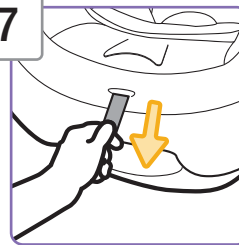
6



Place Chest Clip, Harness Straps, and Buckle Tongues Behind the Headrest and Seat Pad As Shown

Push the chest clip up so it is behind the headrest.

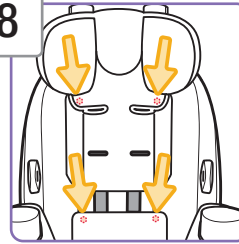
7



Tighten Harness

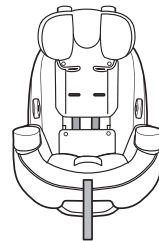
Pull the harness adjustment strap straight out to remove any slack from the harness system.

8



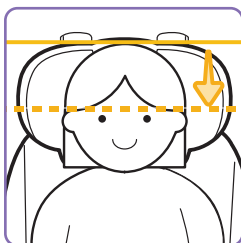
Pull Headrest Pad Down and Wrap Around Bottom of Headrest

Attach the fasteners on the headrest pad and the seat pad.



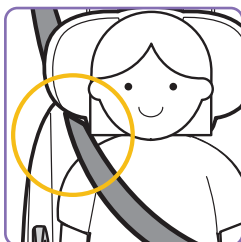
**Finished!**

The car seat has been converted to the **Booster Seat Mode**.



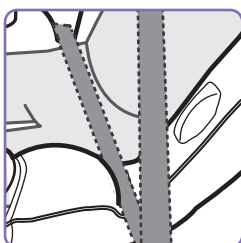
### Head Position

The tops of your child's ears should never be above the top of the booster seat's headrest.



### Shoulder Belt Position

The shoulder belt should lay snugly across the center of your child's shoulder and across their chest; **not on their face or neck.**



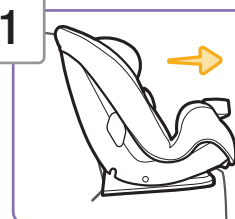
### Lap Belt Position

The lap belt should lay snugly across your child's hips; **not on their stomach.**



You must store the harness system when using the **Booster Seat Mode**, see pages 53-56.

1

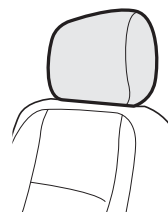


### Make Booster Seat Flush Against Vehicle Seat

The vehicle seat back must be upright.

Put the booster seat into **Position 1**.

**Only** use semi-reclined **Position 2** if necessary to install the booster seat flush against the vehicle seat back.



**If your vehicle seat's headrest interferes with a flush booster seat fit**, check your vehicle owner's manual to see if the headrest can be removed, adjusted, or if there are other possible seating locations to use the booster seat.

2



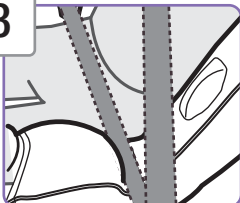
### Have Child Sit in Booster Seat

*continued on next page*





3

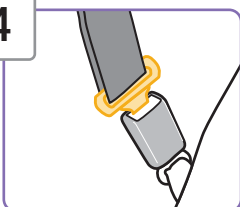


### Position Lap Belt on Child

Route the lap belt portion of the vehicle belt through the **Booster Seat Belt Path** as shown.

The lap belt should lay snugly across your child's hips; **not on their stomach.**

4



### Buckle Vehicle Belt

Pull up on the lap belt to tighten.

5



### Position Shoulder Belt on Child

Pull up on shoulder belt to tighten.

**For models with In and Out Harness Holders:** The shoulder belt should lay under the In and Out Harness Holder as shown.

**For models without In and Out Harness Holders:** The shoulder belt will fall naturally into place.

The shoulder belt should lay snugly across the center of your child's shoulder and across their chest; **not on their face or neck.**

**Only** use the shoulder belt-positioning guide in the headrest **if necessary** to help position the shoulder belt correctly on your child.



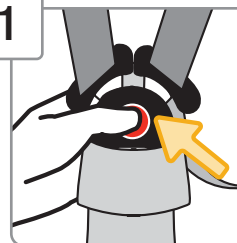
## Finished!

Check periodically to make sure your child has not moved out of position and loosened the shoulder belt.

You do not need to remove the harness system to remove the pad from the shell.

To remove accessories, see pages 3-4.

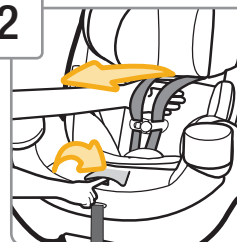
1



### Unbuckle Harness

Press in towards the **top** of the red button to release the buckle tongues.

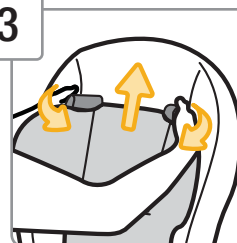
2



### Fully Loosen Harness Straps

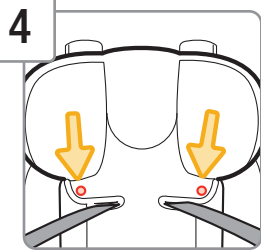
Push down on the harness release lever (through the opening in the pad) while pulling out on the harness straps as shown.

3

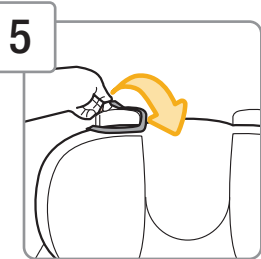


### Adjust Headrest to Highest Position

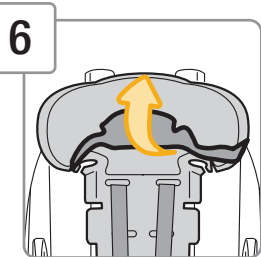
*continued on next page*



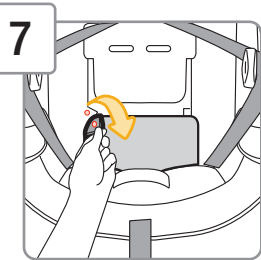
**4** Undo Fasteners on Headrest Pad



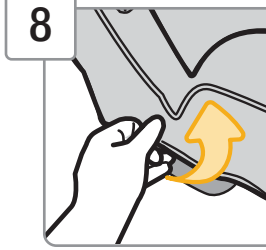
**5** Pull Elastic Straps on Headrest Pad Over Headrest/Harness Adjustment Levers As Shown



**6** Gently Pull Headrest Pad Off Bottom of Headrest As Shown  
Remove the headrest pad from the headrest.

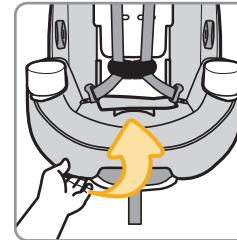


**7** Undo Fasteners on Seat Pad



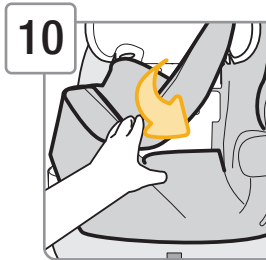
**8** Pull Pad Off Sides of Shell and Front of Car Seat

Pull the buckle strap and the harness adjustment strap out of the openings in the seat pad.



**9** Pull Pad Down and Off of Bottom of In and Out Harness Holders  
(on select models)

Pull up the pad to remove it completely from the In and Out Harness Holders.



**10** Lower Headrest to Middle of Seat

Pull the seat pad off of the shell.

## Cleaning Pad and Accessories

Machine wash separately with cold water on a gentle cycle. Make sure the harness covers are closed so the fastening strips are not exposed. Do not use bleach. Tumble dry separately for 10-12 minutes on low heat. Remove immediately.

## Cleaning Harness Strap

Check the harness straps often for any wear or damage.

**⚠ Do not fully pull the harness strap out of the car seat. Leave it threaded in the hip harness slots. If removed, you will not be able to rethread it.**

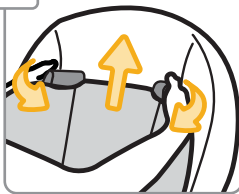
Spot clean using warm sudsy water and damp cloth. Spilled food and liquids on the car seat may result in mold or bacterial growth over time. These spills could also attract insects or rodents.

## Cleaning Buckle & Car Seat Shell

Spot clean using warm sudsy water and damp cloth. Do not submerge into water.

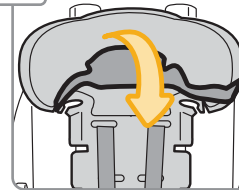
**⚠ Do not use the child restraint without the seat pad or with damaged harness straps.**

1



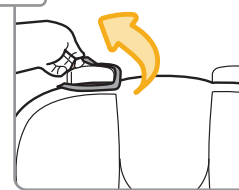
Adjust Headrest to Highest Position

2



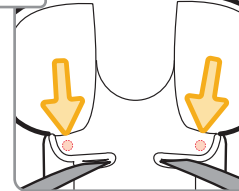
Gently Pull Headrest Pad onto Headrest

3



Place Elastic Straps on Headrest Pad Around Headrest/Harness Adjustment Levers

4



Slide Harness Straps Into Slots in Pad and Attach Fasteners

Pull the headrest pad down around the bottom of the headrest.

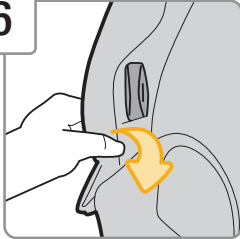
5



Lower Headrest to Middle of Car Seat

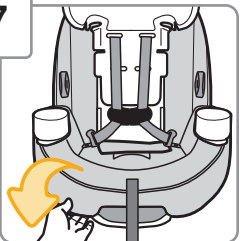
Starting from the the bottom of the car seat, slip the seat pad on the shell.

6



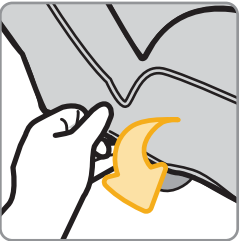
**Push In and Out Harness Holders Through Slots in Seat Pad**  
(on select models)

7

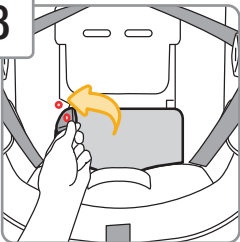


**Wrap Seat Pad Around Bottom and Sides of Shell**

Pull the buckle strap and the harness adjustment strap through the openings in the seat pad.



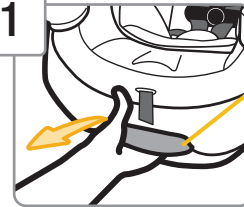
8



**Attach Seat Pad Fasteners**

### Installing Buckle

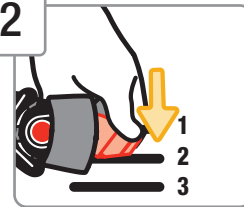
1



**Fully Recline Car Seat**

The recline handle is at the front of the car seat.

2



**Insert Buckle's Metal Retainer into Buckle Slot Closest to Child**

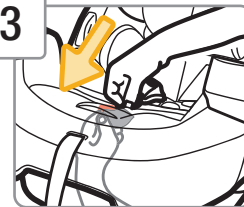
The buckle **must** face out.

Tuck the ends of the buckle cover into the same pad slot as the buckle.

**Rear-Facing Mode:** You **must** use the 1st or 2nd buckle slot.

**Forward-Facing Mode:** Any slot can be used.

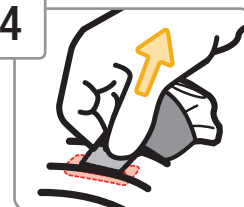
3



**Reach Under Seat Between Base and Shell**

Pull the metal retainer completely through the pad and shell.

4



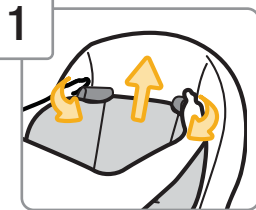
**Check Buckle**

Pull up on the buckle to make sure it is secured.

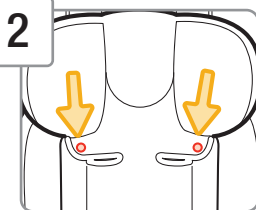
The buckle **must** not pull out.

*continued on next page*

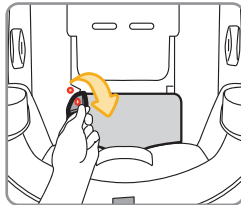
### Installing Harness Straps



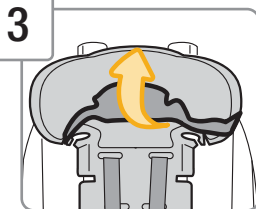
**Adjust Headrest to Highest Position**



**Undo Fasteners on Headrest Pad and Seat Pad**

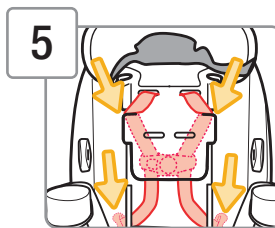


**Gently Pull Headrest Pad Off Bottom of Headrest As Shown**



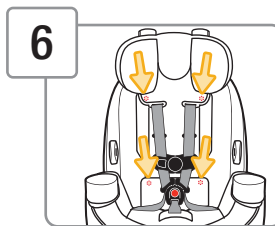
**Loosen Harness Straps**

Unthread the harness straps from the slots on the side of the headrest.



**Pull Chest Clip, Harness Straps, and Buckle Tongues Out From Behind Headrest**

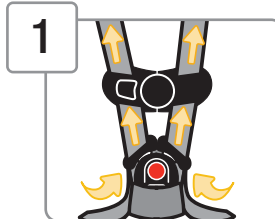
Slide the harness straps into the openings in the headrest pad.



**Pull Headrest Pad Down and Around Bottom of Headrest**

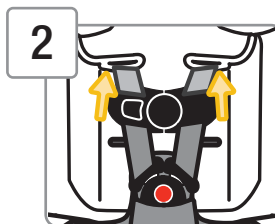
Attach the headrest pad and the seat pad fasteners.

If the harness straps have been removed from the splitter plate, and if the buckle tongues and chest clip have been unthreaded, follow the steps below to rethread them.



**Thread Buckle and Chest Clip**

The harness strap ends go through the **back** of the buckle tongues and through the chest clip **front to back** as shown.

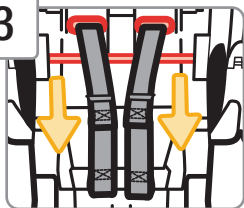


**Thread Harness Straps into Shoulder Harness Slots**

If you will be using the lower shoulder harness slots for smaller infants, see pages 15-18.

*continued on next page*

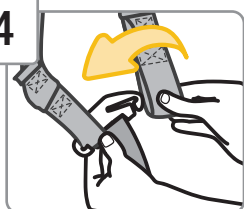
3



**From Back of Car Seat,  
Thread Harness Straps  
Over Metal Bar**

**Do not** twist the harness straps.

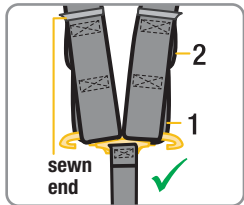
4



**Attach Harness Strap Loops  
to Splitter Plate As Shown**

The sewn ends of the harness strap loops **must** face towards you.

**Do not** twist the harness strap or the harness adjustment strap.



Make sure the harness strap loops are fitted **completely** on both sides of the splitter plate.

**Check your child's fit often.**

If you cannot achieve a snug harness fit for your child, see pages 15-18.

To learn how to check harness tightness, see pages 49-51.

Check the harness straps often for any wear or damage.

**⚠ The harness system must be installed correctly. Do not use a child restraint with damaged harness straps.**



This restraint is certified for aircraft use when used with the internal harness.

This restraint is not certified for aircraft use when used as a booster seat because aircraft seats do not have shoulder belts.

Install the car seat in a window seat to avoid blocking the aisle. If the aircraft lap belt is too short, ask the flight attendant for a belt extender.

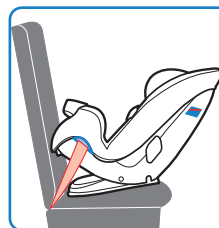


Use only on forward-facing aircraft seats. Contact the airline for their specific policies.

Some airlines may ask to see a label stating that this car seat is certified for aircraft use.

There is an airplane certification label located on the side of this car seat as shown.

**⚠ Store the lower anchor belt and tether strap when installing with aircraft belts.**



### Rear-Facing Aircraft Installation

Follow the steps on pages 29-33.



### Forward-Facing Aircraft Installation

Follow the steps on pages 40-43, skipping the tether strap steps.

## Replacement and Expiration of Car Seat

### Do not risk your child's safety.

To keep your child as safe as possible, Dorel Juvenile Group strongly recommends replacing the car seat even after a minor crash; even if it was not occupied at the time.

### Replacement After a Minor Crash

The National Highway Traffic Safety Administration states that for a crash to be considered minor **ALL of the following must be true:**

- Vehicle able to drive away from the crash site; **AND**
- Vehicle door nearest the car seat was not damaged; **AND**
- No passengers were injured; **AND**
- Airbags did not deploy; **AND**
- There is no visible damage to the car seat.

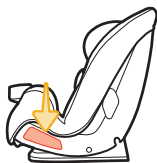
If the crash your car seat was involved in meets **ALL** the criteria, you may not need to replace the car seat.

If one or more of these criteria are not true or if you are uncertain of any of your answers, replace the car seat immediately.

### Replacement After a Moderate to Severe Crash

You **must** replace this car seat if it has been in a moderate to severe car crash.

This car seat is intended to protect a child in a single crash. During a crash, the car seat and all of its parts absorb crash energy which can deform or weaken it. Damage is not always visible. A damaged car seat must be replaced immediately.



### Expiration

On the side of the car seat there is a date of manufacture label as shown.

Do not use this car seat more than 10 years after the date of manufacture.



### Child Restraint Use

**Never take your child out of the child restraint while the vehicle is moving.**

**Never leave your child unattended. Placing your child in a hot child restraint may result in burns.**

**Do not use a child restraint with damaged or missing parts.**

**Do not use a child restraint with cut, frayed or damaged harnesses.**

**Do not substitute parts or try to modify the child restraint in any way. Do not lubricate buckles and fasteners.**

**Do not use any child restraint accessory except those approved by Dorel Juvenile Group.**

**Never allow any child to play with this child restraint; it is not a toy.**

**Do not remove or cover up any of the warning labels or other labels on the child restraint.**

**This child restraint has been certified for use in passenger vehicles. Do not use in a boat, on a motorcycle or in a cargo van or bus where there are no seat belts or tether anchors.**

**Read all instructions for additional warnings.**



### Installation in Vehicle

**Check the vehicle belt or lower anchor belt before each use. Use only if the belt can be tightened properly and locked securely in place.**

**This child restraint should be securely belted in the vehicle even when not in use. In a crash or sudden stop, an unsecured child restraint could injure occupants.**



### Vehicle Seating Position



Never place a child rear-facing in a seating position with an active frontal air bag.



Check the vehicle owner's manual for more information about air bag/child restraint use.



Use the child restraint only on vehicle seats that face forward.

Do not use on seats that face the sides or rear of the vehicle.

For vehicles without a back seat, refer to your vehicle owner's manual.



Children are safer when properly restrained in rear seating positions than in the front seating positions.

According to accident statistics, children in rear seating positions are statistically safer, whether you have air bags, advanced air bags, or no air bags at all.

If you are not sure where to place the car seat in your vehicle: consult your vehicle owner's manual, contact Dorel Juvenile Group Consumer Care Department or visit your local Child Passenger Inspection Station.

Go to <http://www.safercar.gov/cpsApp/cps/index.htm> to find your closest station.

**To avoid your child being seriously burned, take the following precautions:**

- Park in the shade or where sun does not directly hit the car seat.
- Cover the car seat with a sheet or blanket when not in use.
- Check for hot seat and buckles before placing child in car seat.

To help protect your vehicle seat's upholstery from damage, use a single layer towel underneath and behind car seat.



Please complete the postage-paid registration card that came with your child restraint, and send it to us. Child restraints could be recalled for safety reasons. You must register this restraint to be reached in a recall. Send your name, address, e-mail address if available and the restraint's model number and manufacturing date to:

#### Dorel Juvenile Group

2525 State Street  
Columbus, IN 47201

or call 1-800-544-1108 or register online at  
[www.djgusa.com/registration/carseat/us](http://www.djgusa.com/registration/carseat/us).

For recall information, call the U.S. Government's Vehicle Safety Hotline at 1-888-327-4236 (TTY: 1-800-424-9153), or go to [www.NHTSA.gov](http://www.NHTSA.gov).

Tear Off and Mail This Part or Register Online Détachez et postez cette partie ou enregistrez en ligne 4359-4117E

**Consumer:** Just fill in your name, address and email. Please print.  
**Client:** Simplement inscrire votre nom, adresse et courriel. S.V.P. imprimez.

Your Name/Votre nom: \_\_\_\_\_

Your Street Address/Votre adresse: \_\_\_\_\_

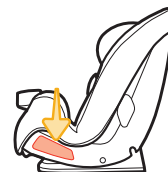
City/Ville: \_\_\_\_\_ Province \_\_\_\_\_ Postal Code/Code Postal: \_\_\_\_\_

Email Address (optional)/Courriel (optionnel): \_\_\_\_\_

AB123CDE SF CARSEAT 2015/05/16

Date of Purchase/Date d'achat: \_\_\_\_\_ L#11 B265035

Example of model number, line code, and manufacture date.



If you don't have the card or if your address changes, you will find the model number, manufacture date, and line code on the label located on side of shell.



Dorel Juvenile Group, Inc. (DJG) warrants this product to the original retail purchaser as follows: This product is warranted against defective materials or workmanship for one year from the date of original purchase.

**An original receipt is required to validate your warranty.**

DJG will, at its option, provide replacement parts or replace this product. DJG reserves the right to substitute if the part or model has been discontinued.

To make a claim under this warranty, please contact our Consumer Care Department by phone: 1-800-544-1108 or text: 1-812-652-2525. Our hours of operation are from 8:00 a.m. to 6:00 p.m. EST Monday through Thursday and from 8:00 a.m. to 4:30 p.m. on Friday.

**Proof of purchase is required and shipping charges are the responsibility of the consumer.**

**Warranty Limitations:** This warranty does not include damages which arise from misuse or abuse of this product.

**Limitation of Damages:** The warranty and remedies as set forth are exclusive and in lieu of all others, oral or written, expressed or implied. In no event will DJG or the dealer selling this product be liable to you for any damages, including incidental or consequential damages, arising out of the use or inability to use this product.

**Limitation of warranties and other warranty terms and state law rights:** Any implied warranties, including implied warranties of the merchantability and fitness for a particular purpose, shall be limited to the duration and terms of the express written warranty.

Some states do not allow limitations as to how long an implied warranty lasts or the exclusion or limitation of incidental or consequential damages, so the above limitations may not apply to you.

This warranty gives you specific legal rights, and you may have other rights, which vary from state to state. Neither DJG nor the dealer selling this product authorized any person to create for it any other warranty, obligation, or liability in connection with this product.

**1. If the car seat's buckle or harness release lever sticks or you cannot get the straps tight enough around your child:**

**Do not lubricate.** Check around the lever and the retractor for dropped food, sticky spilled drinks, dirt, leaves, etc. Clean with warm water and/or remove the object with tweezers. If you cannot get the harness to adjust and remain tight with the buckle securely locked, **do not** use this car seat.

**2. If your harness twists:**

Straighten the harness each time you put your child in the car seat to help prevent twisting. Lock the buckle and tighten the harness so it will be ready for next use.

Chest Clip	Lower Anchor Belt
Buckle Assembly	Cup Holder (1)
Seat Pad Set	Instructions
Tether	Locking Clip

**If requested color is not available,  
similar color will be substituted.**

**Prices are subject to change.**

**Applicable tax and shipping &  
handling will also be added.**

**For parts availability and questions,**

**Call:** 1-800-544-1108

**Text:** 1-812-652-2525

**Chat:** [www.safety1st.com](http://www.safety1st.com)

**If you already know which parts you need,**  
you may complete your order with a credit card  
by calling us at 1-800-544-1108.

**We accept Visa or MasterCard.**

**Hours of Operation:**

M-TH: 8:00 AM - 6:00 PM EST  
FRI: 8:00 AM - 4:30 PM EST

Thank you for choosing this car seat, also known as a child restraint. The DJG family is committed to creating car seats with the most comfort and convenience available today.

Remember, parents are a child's first teachers and examples. If you always buckle your seat belt, your child will think it is the natural thing to do. Make it a firm rule that the vehicle does not go until everyone is buckled up. Make no exceptions.

No one can predict if use of a car seat will prevent injury or death in a particular crash. However, when combined with careful driving, proper use of a car seat can lower a child's risk of injury or death in most crashes.

If you have questions or any concerns with this car seat, please contact our Consumer Care Department:

**Call:** 1-800-544-1108

**Text:** 1-812-652-2525

**Website:** [www.safety1st.com](http://www.safety1st.com)

**Hours of Operation:**

M-TH: 8:00 AM - 6:00 PM EST  
FRI: 8:00 AM - 4:30 PM EST